

# ROCKET PACK WAREHOUSE MANAGEMENT RECEIVING & PICKING TROLLEY SUITE



Streamlining the inbound receiving, checking and put-away preparation process can have a hugely positive impact on overall warehouse performance. Keeping lead times short and stock availability high requires efficient put-away that avoids errors when goods enter the warehouse, thereby preventing an escalating chain of events that can cause delays, incorrect picks and ultimately deterioration in customer service. Trolleys also provide opportunities for productivity gains in picking processes, particularly where customer ordering profiles result in high volumes of small deliveries.

## TROLLEY BASED BEST PRACTICES

The Rocket Receiving & Picking Trolley Suite provides support for best practice goods-in and picking methods, in particular, put-away of multiple mixed SKUs by trolley to multiple bins, and concurrent delivery picking onto trolleys.

The Trolley suite is built on and around standard SAP warehouse management functions ensuring ease of integration and support. Two key process areas:

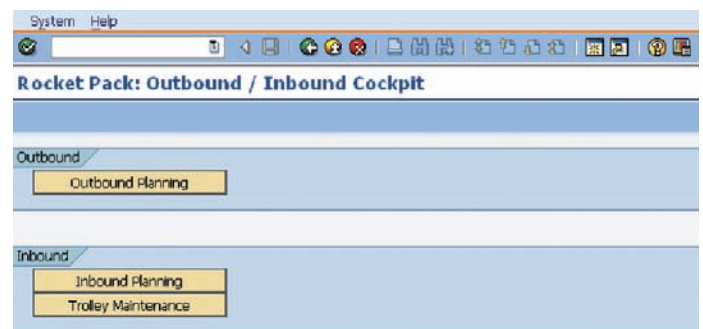
### Inbound

- ❖ Efficient workstation-based goods-in processing, checking and put-away trolley preparation
- ❖ Management of put-away trolleys

### Outbound

- ❖ Quick and easy planning of customer deliveries for efficient concurrent picking onto trolleys

The warehouse trolley cockpit provides centralised access to the suite of trolley transactions.



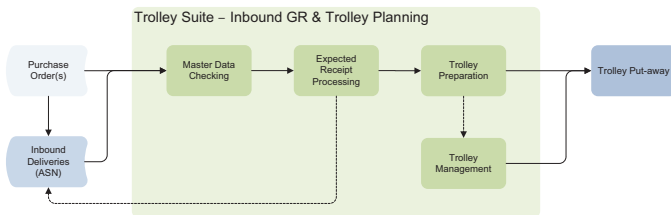
*Trolley Cockpit*

## INBOUND PROCESSING

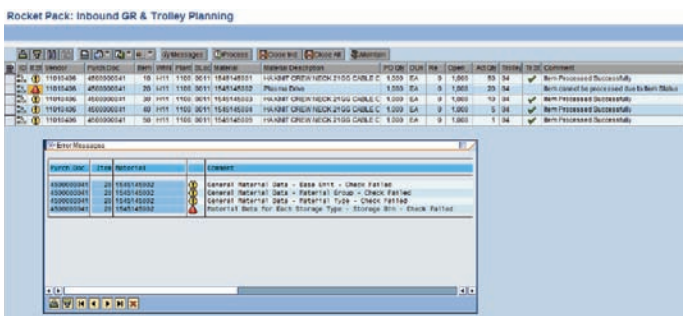
The efficient and accurate management of goods-in is critical for overall warehouse performance. Mistakes made during this stage cascade through all other warehouse activities, resulting in delays or, worse still, reduced customer service. The Receiving & Picking Trolley Suite Rocket Pack provides the inbound administration team with a single receiving, checking and put-away trolley preparation transaction that helps avoid such mistakes.

Furthermore, this SAP Warehouse Management add-on enables efficient multiple SKU trolley (or pallet) put-away through standard SAP RF transactions. Further accuracy and efficiency gains can be achieved through compatibility with the voice directed transaction provided with the Rocket SAP WM Voice Suite (see related Rocket Packs).

# WAREHOUSE MANAGEMENT RECEIVING & PICKING TROLLEY SUITE



*Inbound Goods Receipt & Trolley Planning Process Overview*



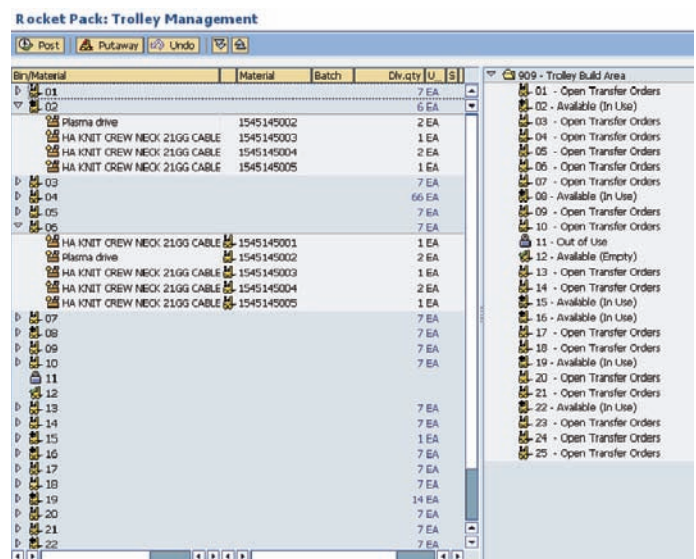
*Inbound GR & Trolley Planning Screen showing master data checks*

Key features of inbound GR & trolley planning:

- ❖ Selection by vendor, purchase order or inbound delivery
- ❖ Integrated and customisable material/article master data checks
- ❖ Blind receipt of actual quantity
- ❖ Allocation of purchase order/inbound delivery line items to one or more trolleys in preparation for put-away
- ❖ Closure of trolleys to prevent addition of further items
- ❖ Post goods receipt for the trolley
- ❖ Initiate put-away (trigger transfer order creation) for the trolley, individually or collectively
- ❖ View any processing errors

## INBOUND TROLLEY MAINTENANCE

If exceptions arise, such as trolley breakdown, re-planning and management of the put-away trolleys can be carried out quickly using the user-friendly trolley management transaction.



*Inbound Trolley Management Screen*

The following functions are available to the goods-in administration team:

- ❖ Review trolley contents
- ❖ Reallocate stock between trolleys
- ❖ Block/unblock trolleys for processing
- ❖ Review trolley status
- ❖ Initiate trolley put-away
- ❖ View any processing errors

# WAREHOUSE MANAGEMENT RECEIVING & PICKING TROLLEY SUITE



## OUTBOUND TROLLEY PLANNING

The efficient practice of grouping multiple deliveries together and picking them concurrently onto a trolley or retail cage is simplified with the use of the Outbound Trolley Planning transaction.

Outbound trolley planning consists of the following components:

- ❖ Trolley position assignment – unique trolley position for each delivery
- ❖ Transfer order creation
- ❖ Label printing – integration of customer label printing requirements

Trolley planning can be carried out in the foreground if operator input is required or automatically in the background after delivery group creation with sequentially assigned trolley positions.

Doc No	Plant	Del. Date	Customer	Customer Name	No	Delivery quantity	Gross weight (kg)	Volume (m <sup>3</sup> )	Del. Status
88000101	UK	11.06.2009	1	Rocket Consulting Ltd Customer	1	1.500	1.150	0	COG: A: Not planned
88000102	UK	18.07.2009	1	Rocket Consulting Ltd Customer	1	100.000	100.000	0	COG: A: Not planned
88000103	UK	18.07.2009	1	Rocket Consulting Ltd Customer	1	100.000	100.000	0	COG: A: Not planned
88000104	UK	05.08.2009	1	SP Ware Facility	4	20.000	2.000	0	COG: A: Not planned
88000105	UK	07.08.2009	1	SP Ware Facility	5	40.000	4.000	0	COG: A: Not planned
88000106	UK	11.08.2009	1	SP Ware Facility	4	1.500.000	100.000	0	COG: A: Not planned
88000107	UK	11.08.2009	1	SP Ware Facility	1	5.000	1.000	0	COG: A: Not planned
88000108	UK	19.08.2009	1	SP Ware Facility	1	10.000	2.000	0	COG: A: Not planned
88000109	UK	24.10.2009	1	SP Ware Facility	5	10.000	1.000	0	COG: A: Not planned
88000110	UK	05.11.2009	1	SP Ware Facility	5	5.000	5.000	0	COG: A: Not planned

Outbound Trolley Planning Screen

## COMPATIBILITY AND SYSTEM REQUIREMENTS

The Warehouse Receiving & Picking Trolley Suite is compatible with SAP R/3 4.6c onwards and SAP Enterprise Core Component (ECC) version 5.0 onwards.

Warehouse Management is required either with or without Handling Unit Management. The use of transfer orders for multiple deliveries is required.

## ABOUT ROCKET PACKS

Drawing on the collective experience of numerous implementations into a variety of different business operations and an in depth knowledge of the SAP software, Rocket have developed a library of products and enhancements (Rocket Packs) to compliment and extend the SAP Logistics Execution, Warehouse Management and Supply Chain functions in order to meet commonly occurring business and technical challenges.

Developed following strict standards, including SAP approved enhancement techniques and development namespaces, and accompanied with user guides and online help, Rocket Packs are ready to deploy robust solutions that substantially increase business benefit while reducing implementation risk and cost compared to bespoke SAP development.

## RELATED ROCKET PACKS

The SAP Warehouse Management Voice Suite Rocket Pack provides a truly integrated solution for voice directed picking, put-away and internal transfers. The combination of the Trolley suite and Voice suite provides highly efficient optimised processes capable of delivering substantial business benefits and a short return on investment period, as well as numerous additional benefits when compared to external interfaced voice and traditional RF solutions.

For further information and to learn how your business could benefit from the extended SAP functionality that Rocket Packs provide - **contact us and start your mission today.**